

Federal Waterways Engineering and Research Institute (BAW)  
smile consult GmbH  
Wadden Sea Forum  
PlanGIS GmbH

## **TrilaWatt**

**Digital hydro-morphological twin of the Trilateral Wadden Sea**

Wadden Sea Forum – 44th Plenary Meeting

Jever, Germany, 7<sup>th</sup> September 2023

# Research Objective and Work Packages

---

## Research objective:

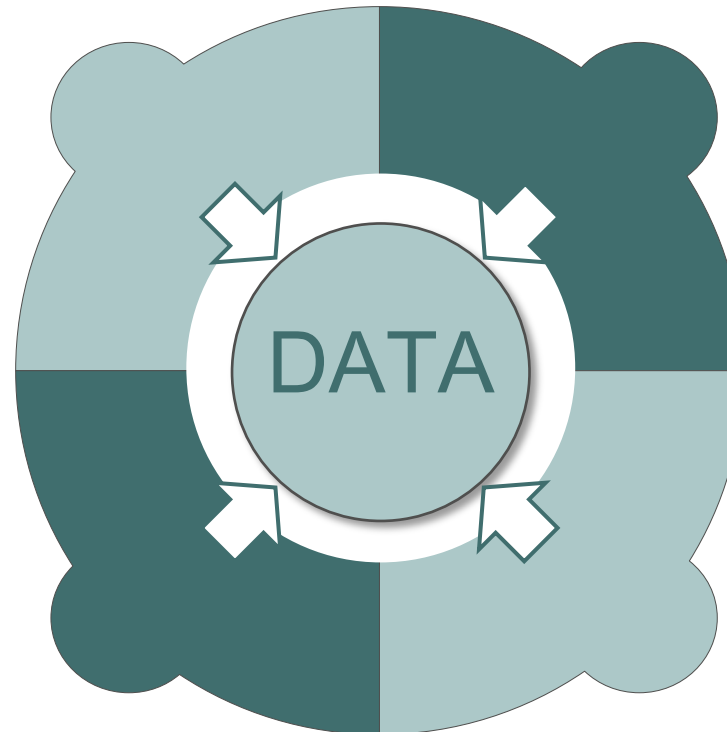
Our goal is the synthesis of scattered data (A-C) in the Trilateral Wadden Sea area to reliable, high-resolution data products for research, consulting, and governmental policy decision in the period of 2000 to 2020.

### (A) Geomorphology

Consistent, annual high-resolution bathymetry data.

### (B) Surface Sediments

Information about likely surface sediments using sediment samples and numerical modeling.



### (C) Physical Oceanography

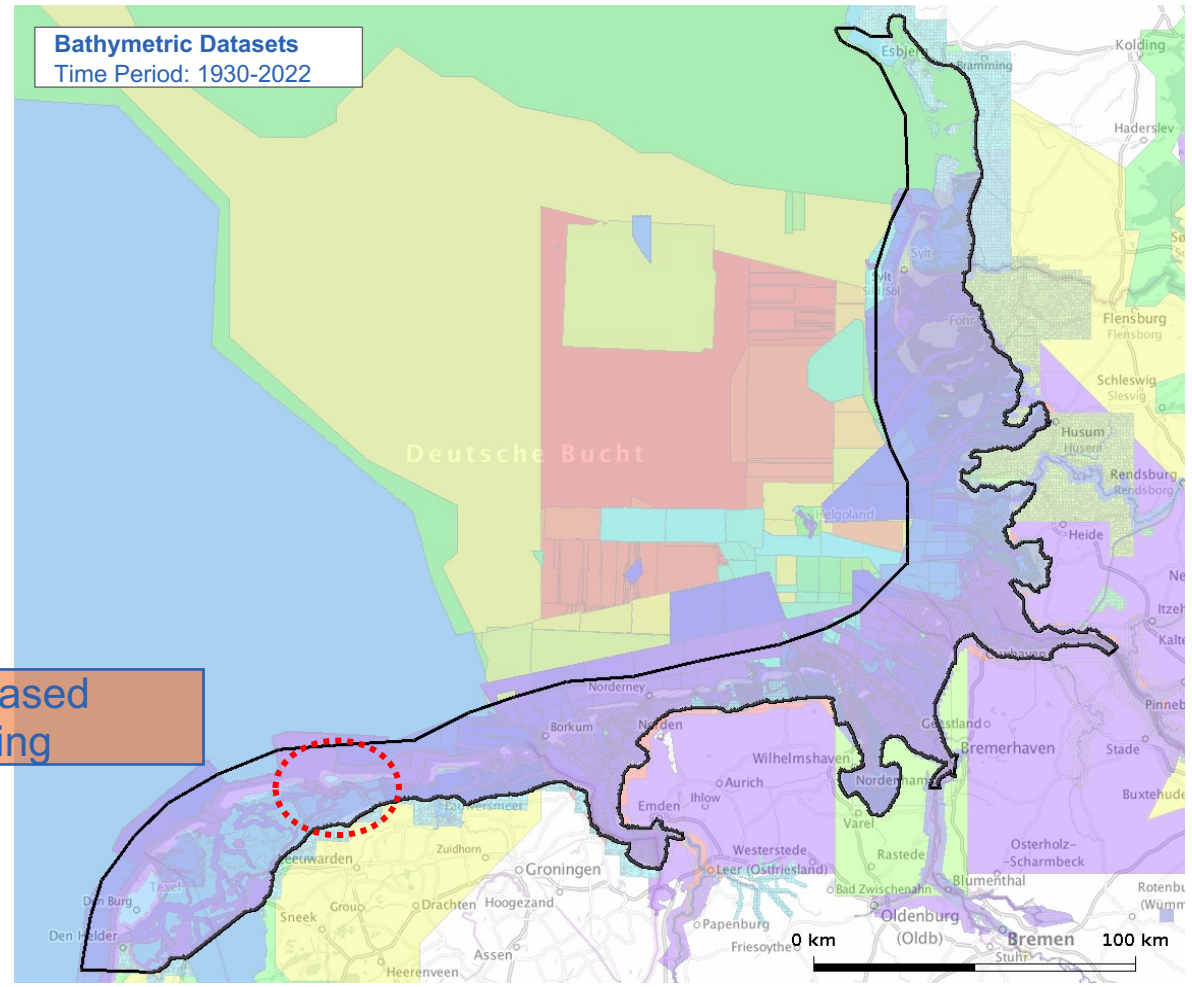
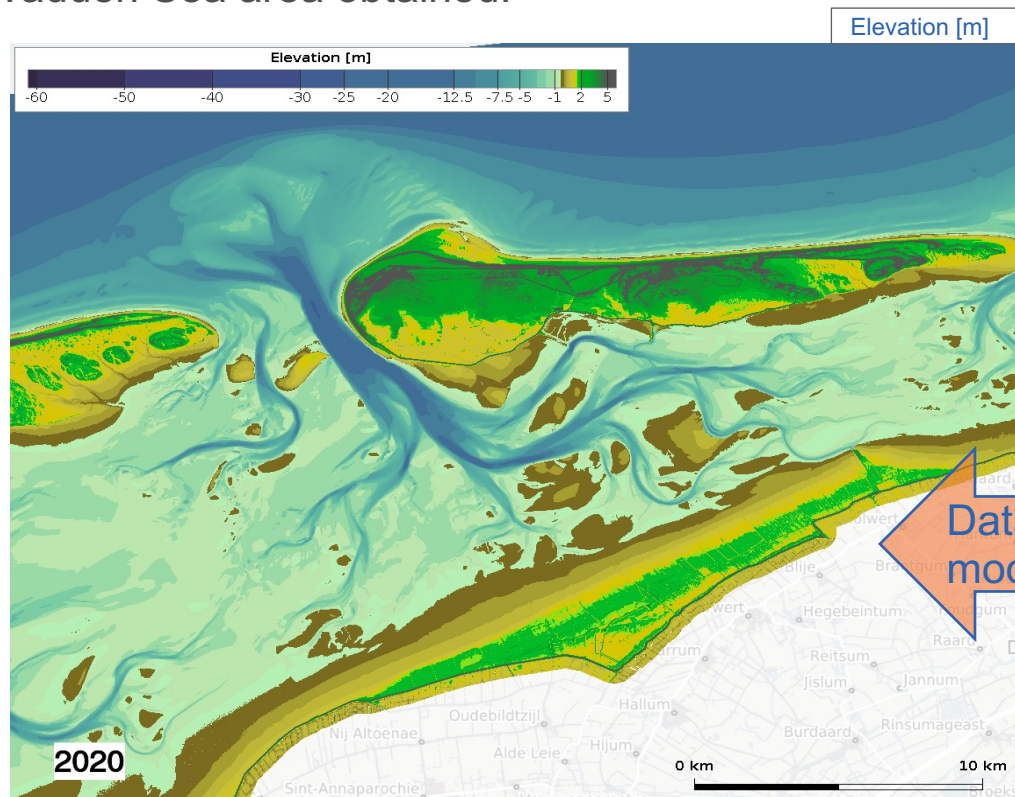
Numerical simulations of the entire North Sea to describe tides, salinity, heat flux, and sediment transport.

### (D) Interactive Webviewer

Enabling users from different background to move efficiently through our big data collection.

# Status on Data: Coverage of the bathymetric data collected up to date

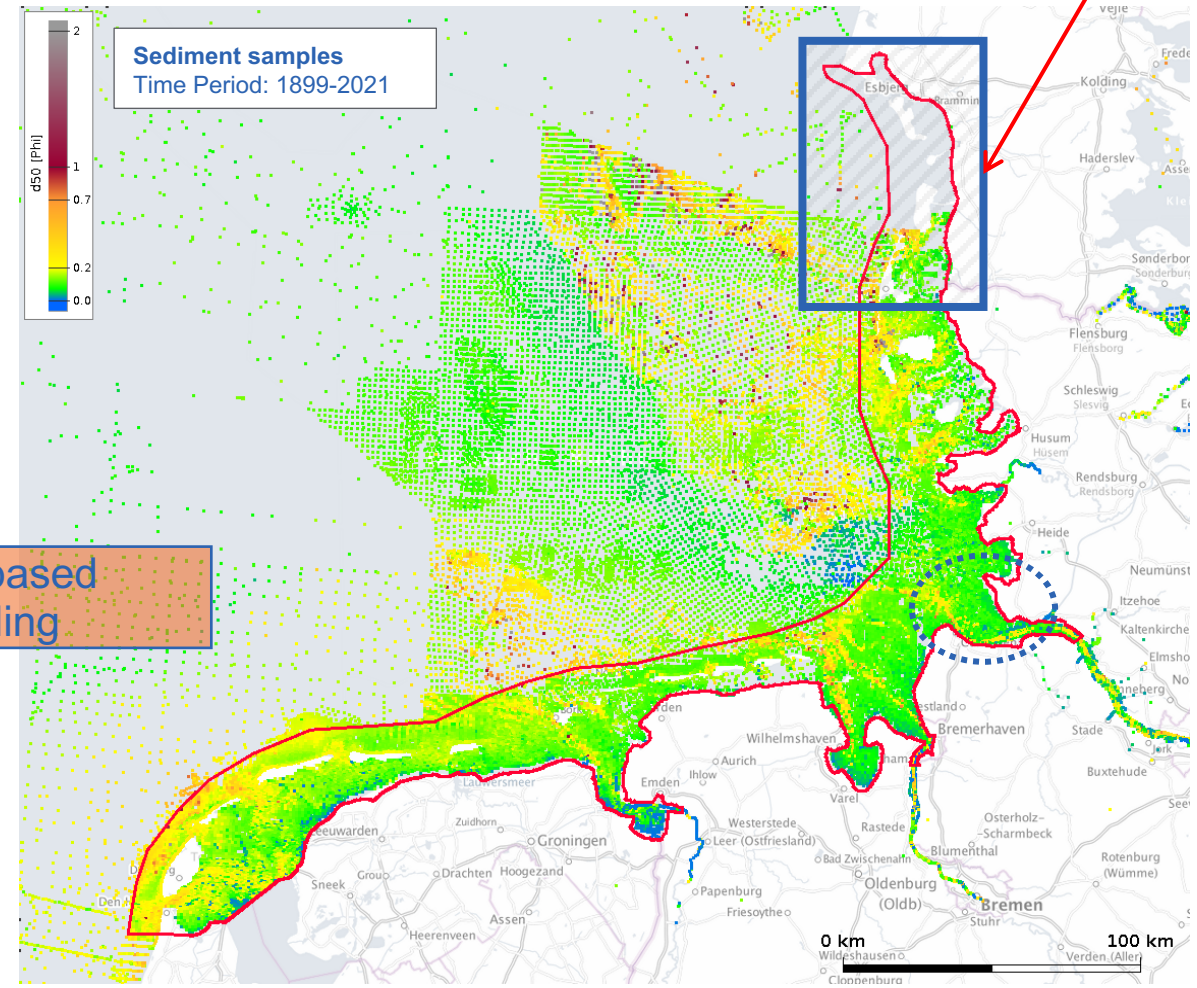
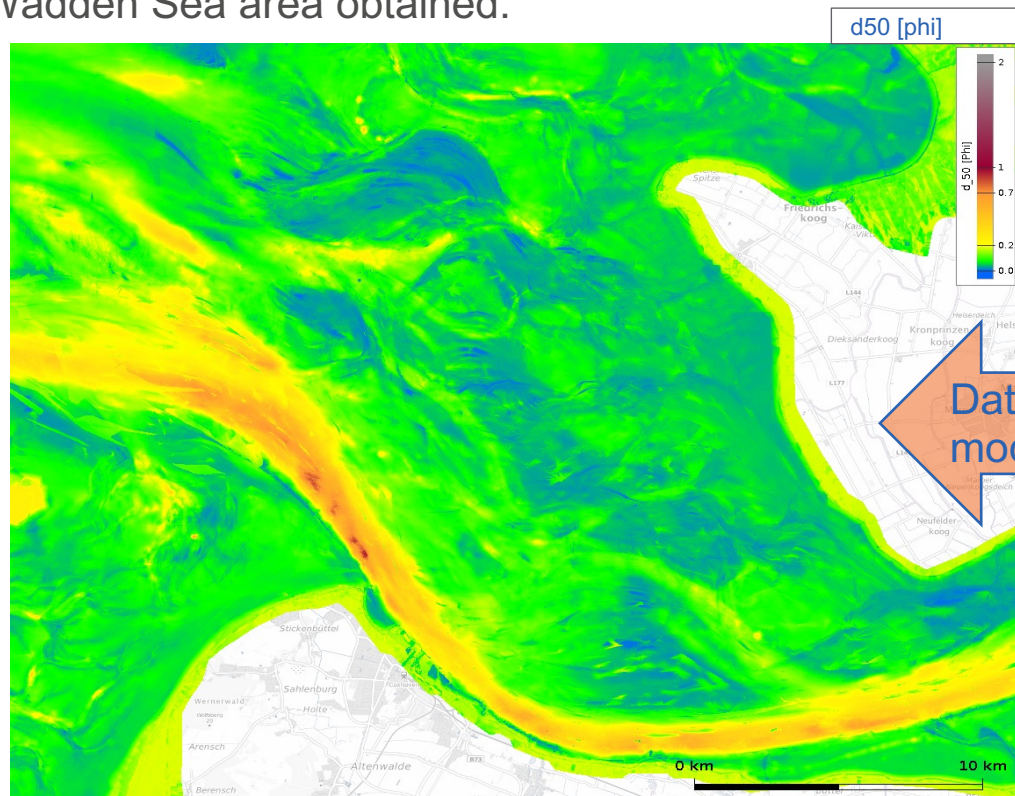
- From 144,000 to currently ~160.000 bathymetric surveys and Open-Source products intended as final product with elevation data)
- Up to date insufficient data covering the Danish Wadden Sea area obtained.



Data-based modelling

# Status on Data: Coverage of the Sediment data collected up to date

- From 45,000 to currently ~ 65,000 surface sediment samples collected for the project area.
- Up to date insufficient data covering the Danish Wadden Sea area obtained.

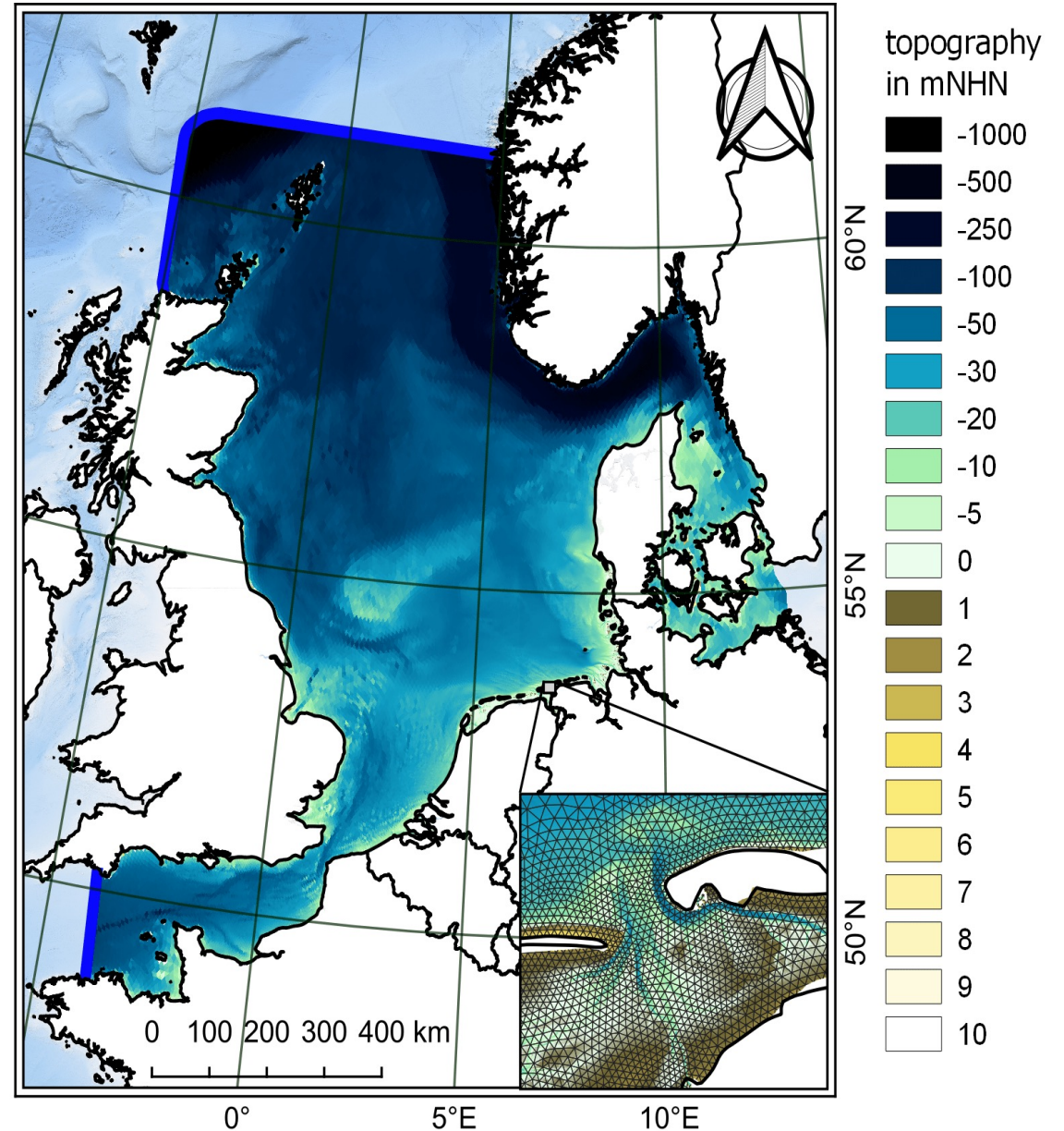


Source: Smile Consult GmbH

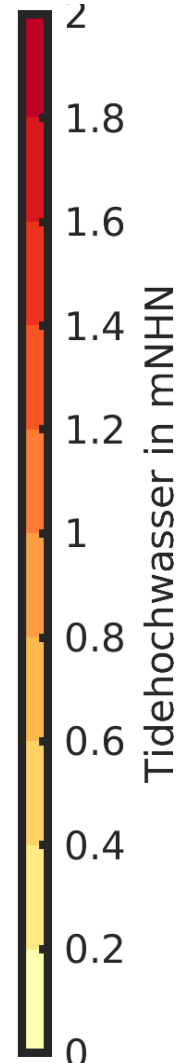
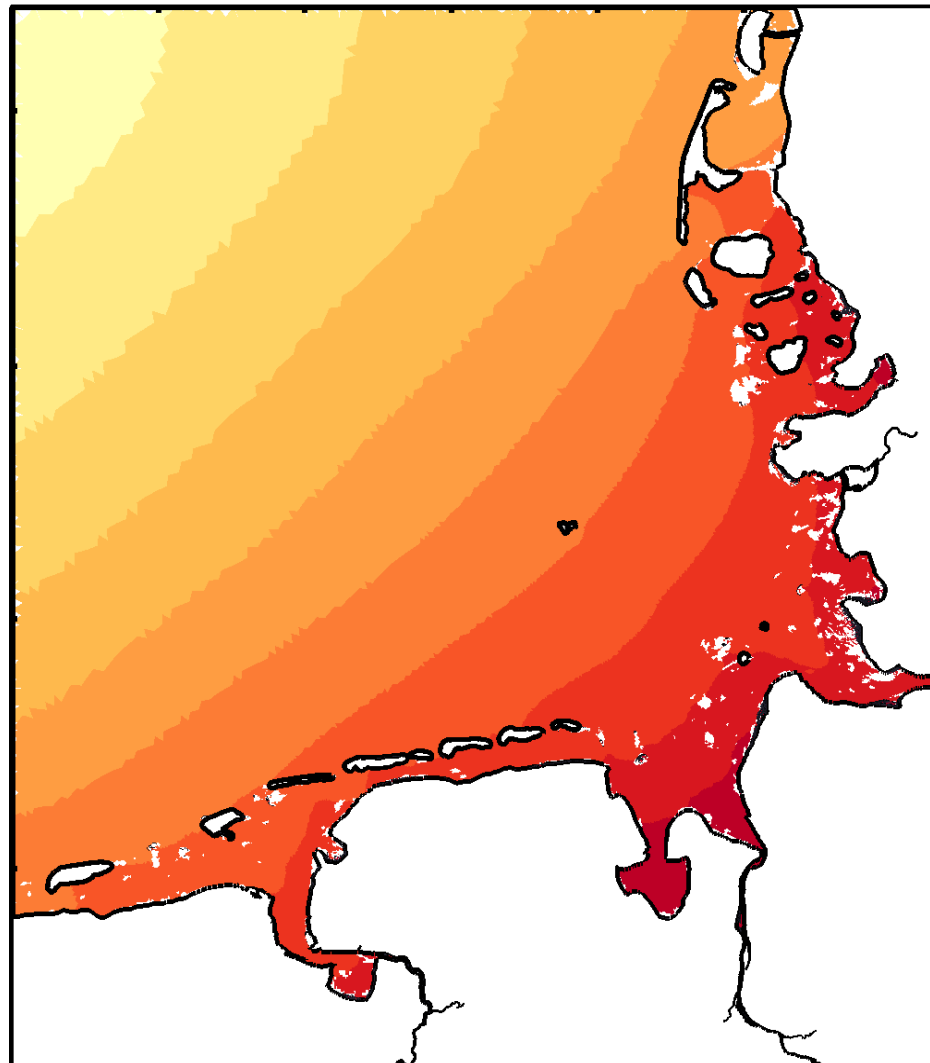
# Status on Data and Modelling (BAW –

Numerical model is set up and calibrated for the year 2020

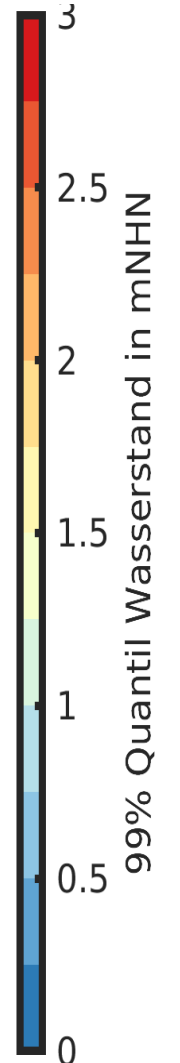
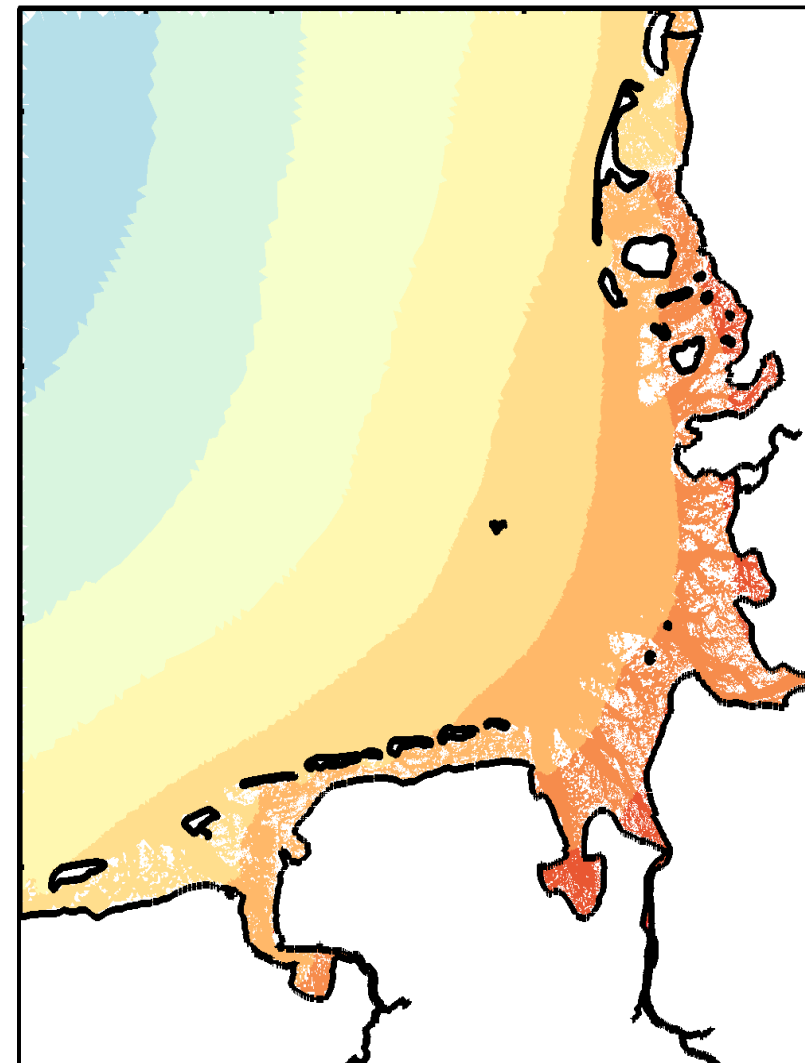
- We are currently putting the finishing touches on the model
- Next steps are wave and sediment transport modeling
- First products for 2020 will be available by the end of the year



# Status on Data and Modelling (BAW)



Source: BAW



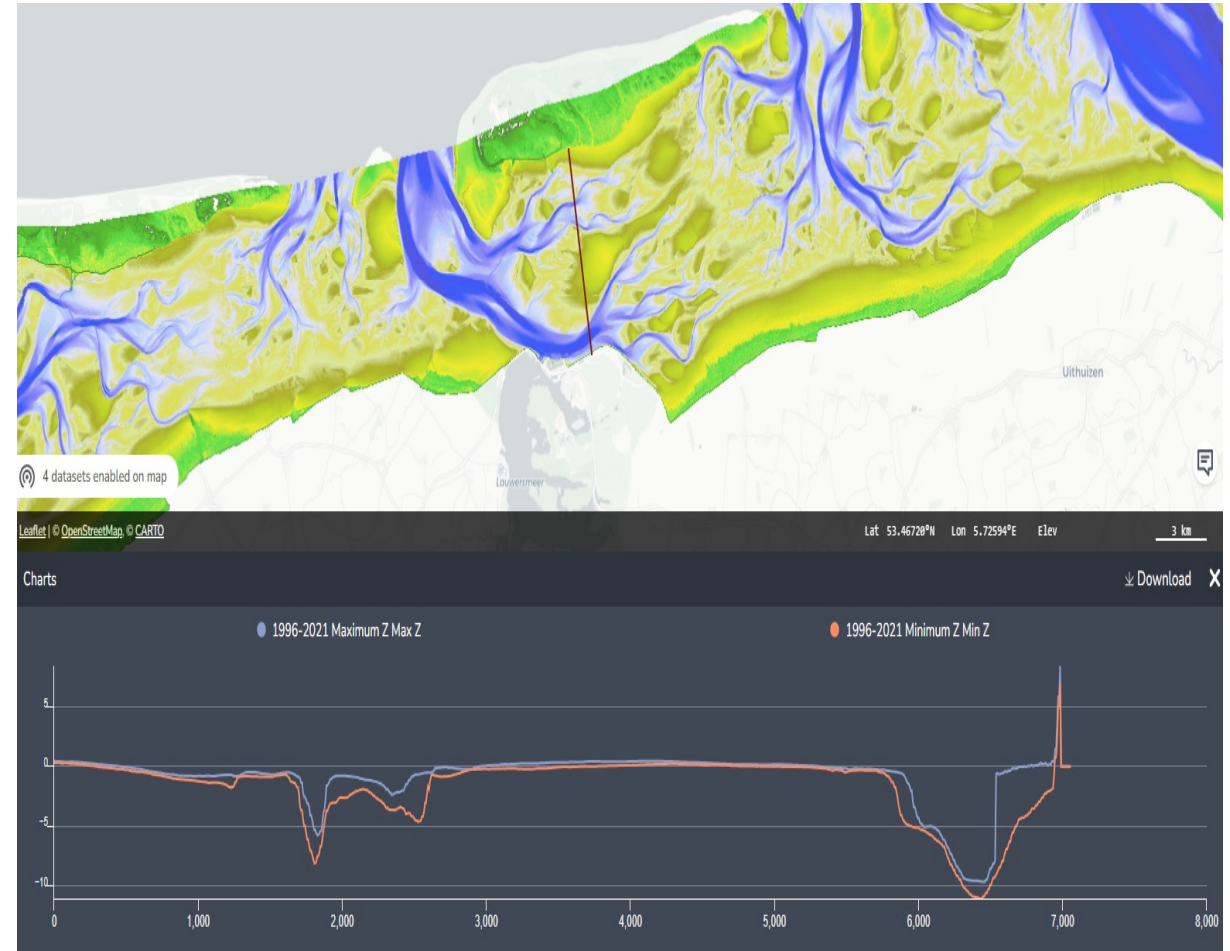
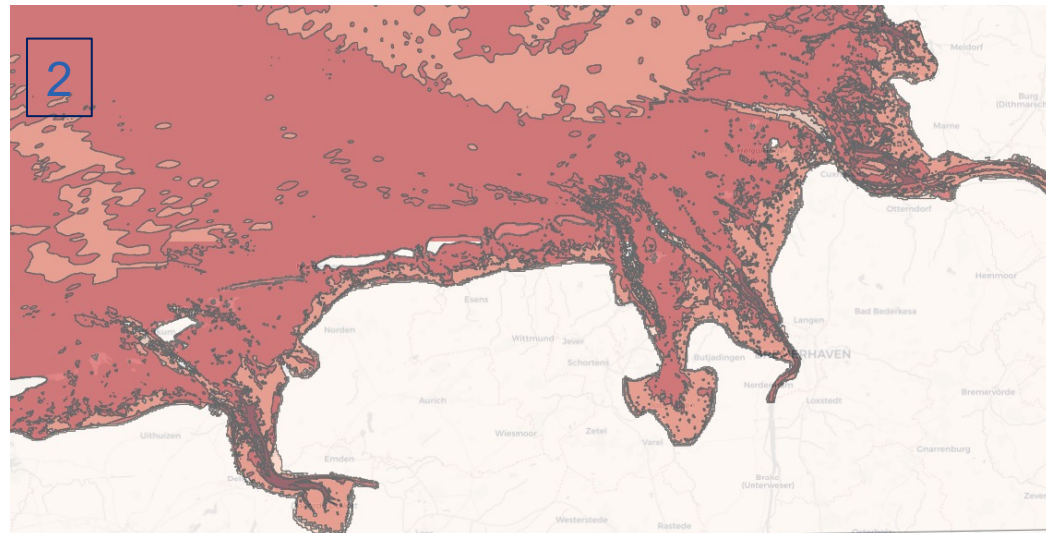
Source : BAW

# Status on Data Infrastructure

## Recent changes to the TrilaWatt Map viewer

1

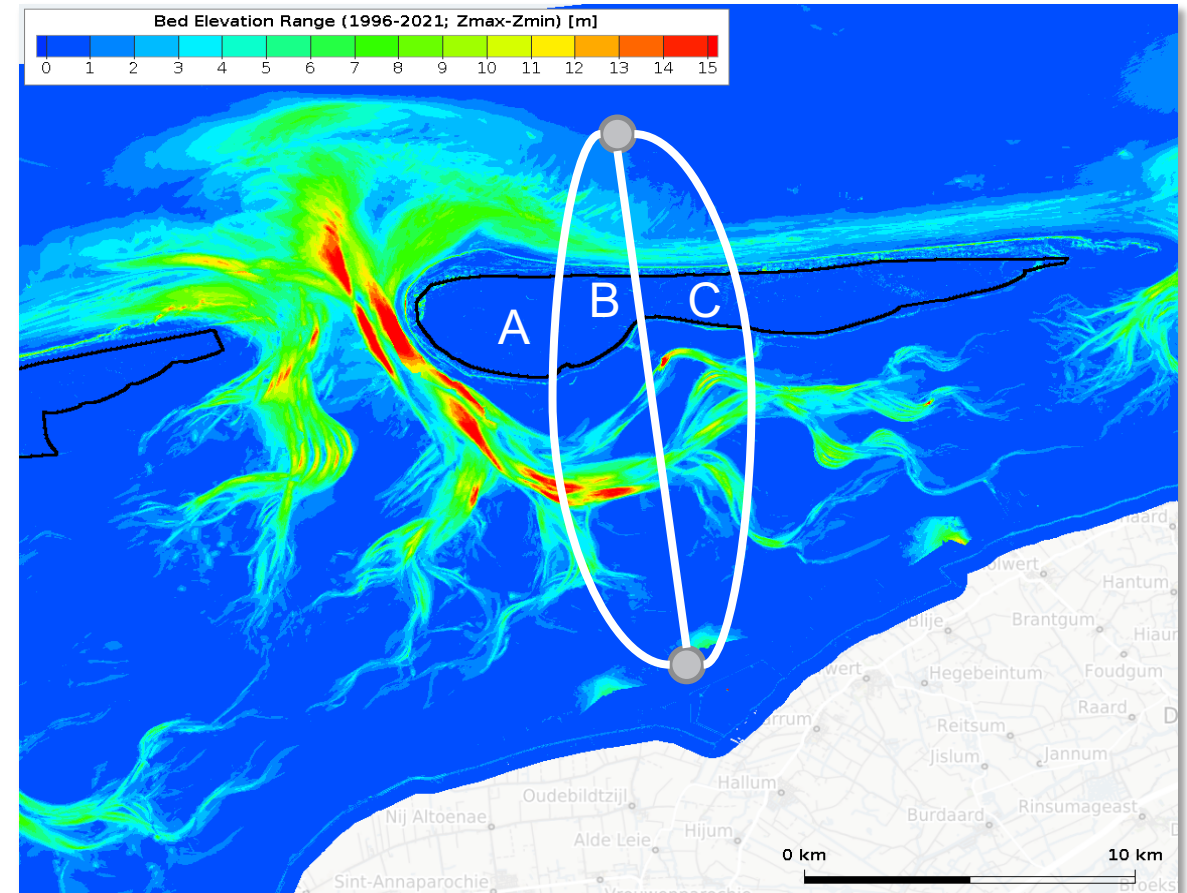
- Prototype Web Processing (WPS) functions:
  1. Depth profile creation of several water depth datasets
  2. Mussel potential map prototype generation with process chaining



Source: planGIS

# Use-Case: Cable Routing

- Cable routing remains a challenge and will only increase in relevance!
  - Offshore (wind) energy?
  - Water supply?
  - Hydrogen?
  
- Why is it difficult to determine?
  - Ecological habitats
  - Anthropogenic influences
  - Natural morphodynamics



Source: Smile Consult GmbH



# TrilaWatt Map Viewer new Features

---

**1. Max – Min Z profile 1996 – 2021**

**2. Mussel Potential Maps**

Map Viewer <https://app.trilawatt.eu/viewer/>

# Use-cases / Pilot case studies

---

List of Current use-cases ;

1. Sediment management, - on hold until results are there
2. cable routes - currently in progress
3. habitat calculator - prototype ready to be tested
4. Maritime Strategy Framework Directive reports - next meeting scheduled

END

---

Thank You

# TrilaWatt Application : Habitat Identification

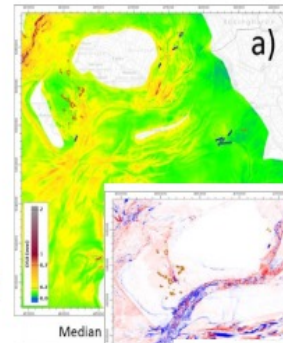
## Planning

Objectives  
+  
Data Gaps

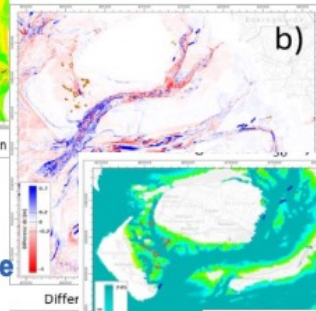


## Data Evaluation

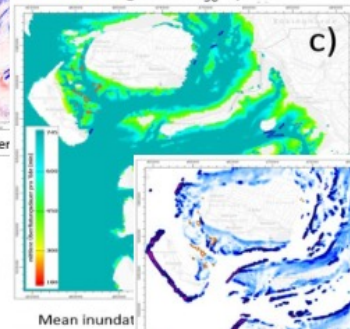
Sediment Grain  
size



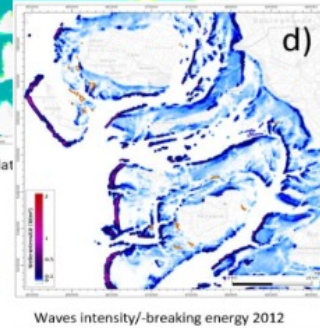
Bathymetry difference



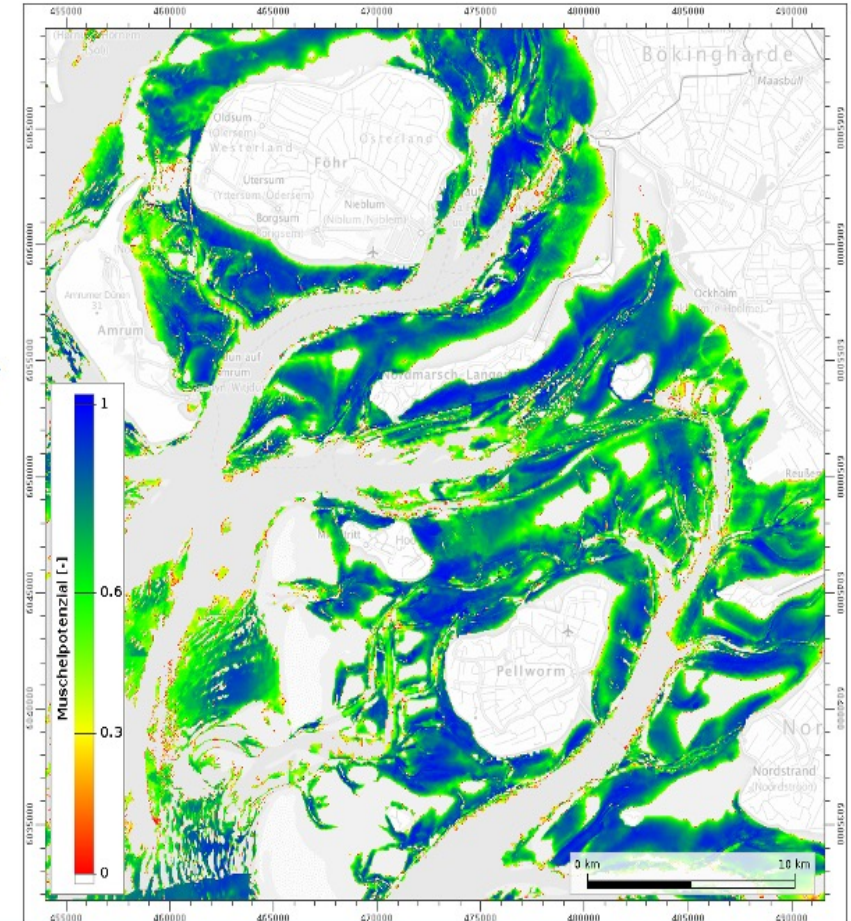
Inundation Duration



Wave Intensity



## Habitat Identification

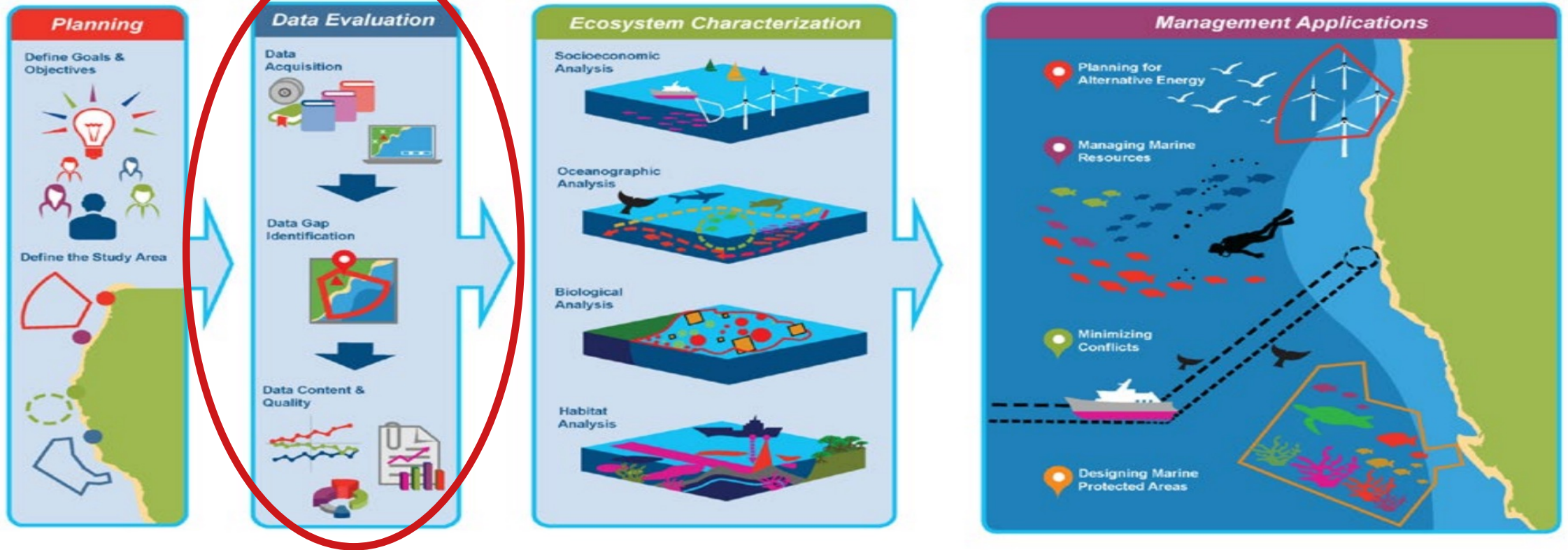


Source: EasyGSH-DB Final Scientific Report

# TrilaWatt Application : A Tool To support Marine Spatial Planning

The assistance systems that facilitates:

1. Planning procedures for the development of Offshore Projects
2. Quality assured and Consistent data



Source : O'Hagan, Anne Marie. 2020 State of the Science Report, Chapter 11: Marine Spatial Planning and Marine Renewable Energy. United States: N. p., 2020. Web. doi:10.2172/1633204.