

The SIMP

Integrated Management Plan for ONE Wadden Sea World Heritage

07 September, 2023

WSF 44



© albedo69 Satellitebildverksiat t e K. (Image processing) : Broekman, Corisjij, OmH (scientific consulting), raw data: J. S. Geological Survey



unesco
World Heritage Site



WADDEN SEA
WORLD HERITAGE

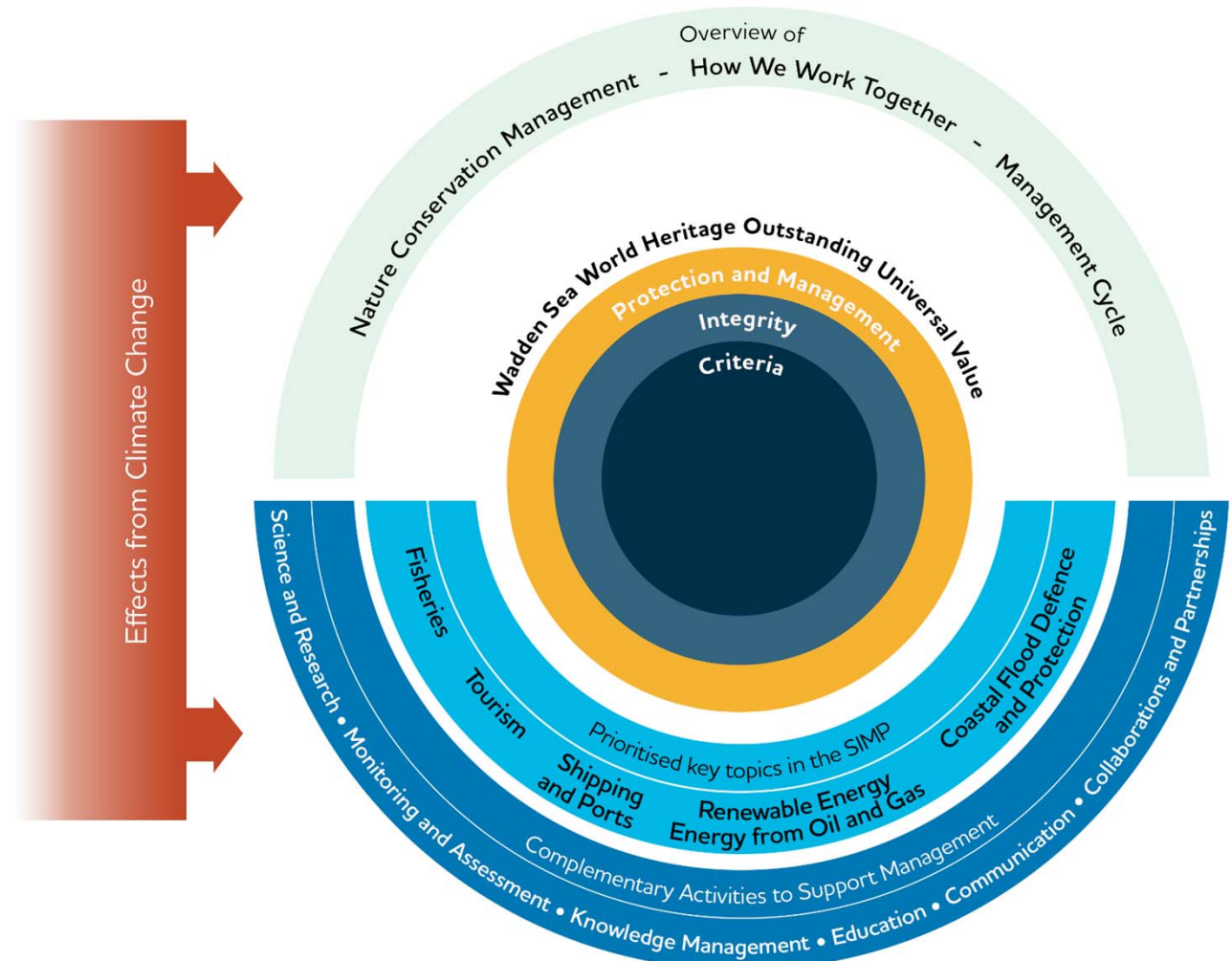


Common
Wadden Sea
Secretariat

Adaptive SIMPlementation strategy

Aims:

operationalise
support
strengthen



Adaptive SIMPlementation strategy

<https://www.waddensea-secretariat.org/adaptive-simplmentation-strategy-2023-2026>

SIMPlementation Operational Framework

Step-by-step Approach

Gradual progress, allow for participation and adaptation.

Use of existing tools

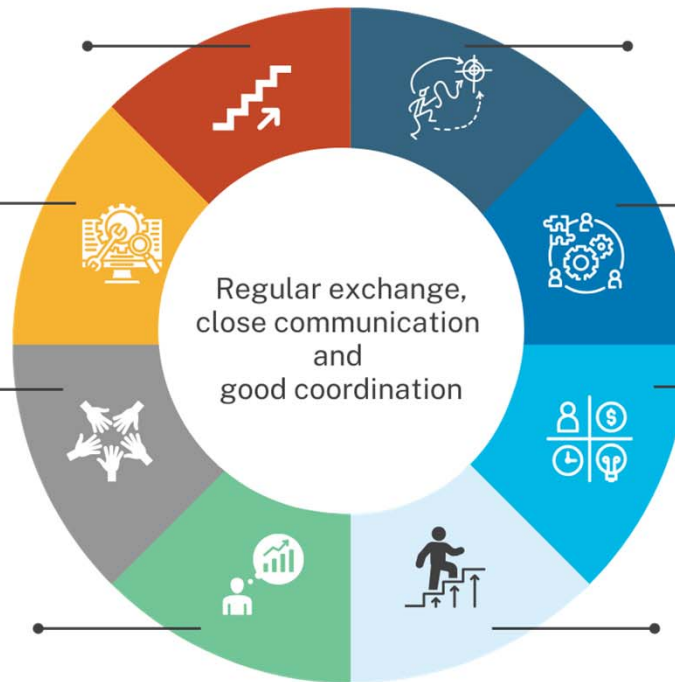
Build on, enhance the use of existing plans, strategies and frameworks.

Activities

Complement each other as much as possible to pool resources together and use synergies.

Expectations and risk management

Implementation by TWSC and stakeholders. Clarity in who-does-what and decision making process.



Agile setup for working on the SIMPimplementation

CWSS and trilateral group. Using existing TWSC bodies and in collaboration with stakeholders.

Coordinated Approach

SIMPlementation is in the work plans of all TWSC bodies.

Resources

Strategic prioritisation. Resources and capacities dedicated by TWSC and the involved stakeholders.

Progress Reports

Regular reporting to allow for budget planning and adjustment of activities.



unesco
World Heritage Site



WADDEN SEA
WORLD HERITAGE



Common
Wadden Sea
Secretariat

THERE IS A PLACE – WHERE HEAVEN AND EARTH SHARE THE SAME STAGE

Photo: Delft Waddenpark



unesco
World Heritage Site

